

Civic Theatre Restoration & Strengthening

Mark Hedley
Senior Engineer
Downer NZ Ltd

Mike Farrelly
Construction Superintendent
Hawkins Construction
(On behalf of Downer NZ Ltd)

Civic Theatre Restoration & Strengthening

Constructed 1929

Re-Furbished 1999



Civic Theatre Restoration & Strengthening

New Fly Tower



Old Fly Tower removed

Existing Brick Proscenium wall to be replaced by new reinforced concrete wall



Civic Theatre Restoration & Strengthening

*Proscenium wall
de-construction*

*New reinforced
concrete wall
complete
(behind brick
wall)*

*New Fly-Tower
steel framing
underway*

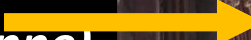


Civic Theatre Restoration & Strengthening

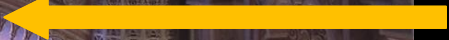
Minaret Tower



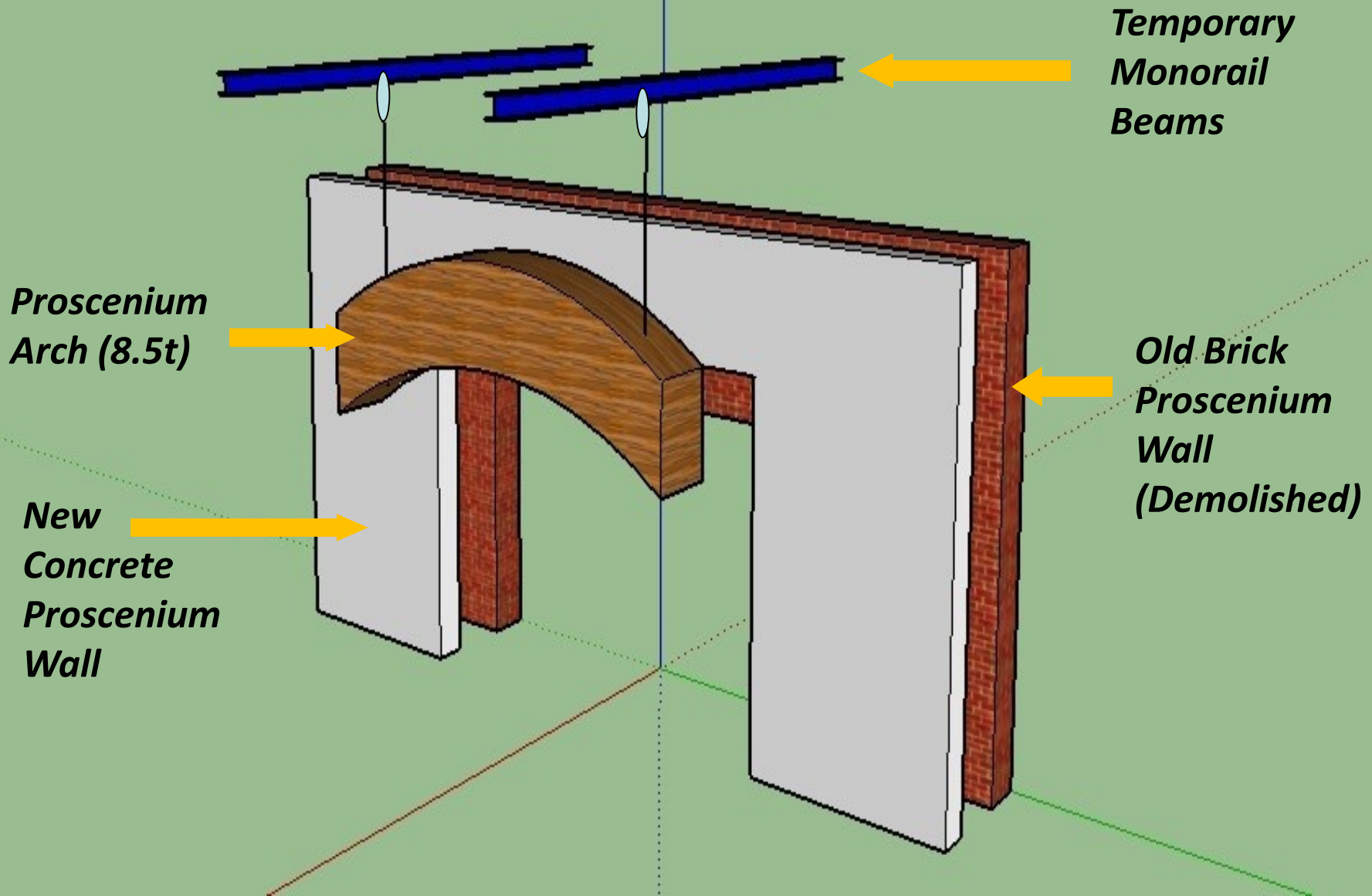
Opera Box (15 tonne)



Proscenium Arch (8.5 tonne)



All to be raised two metres to suit new Theatre configuration



Civic Theatre Restoration & Strengthening



*Proscenium
Arch*

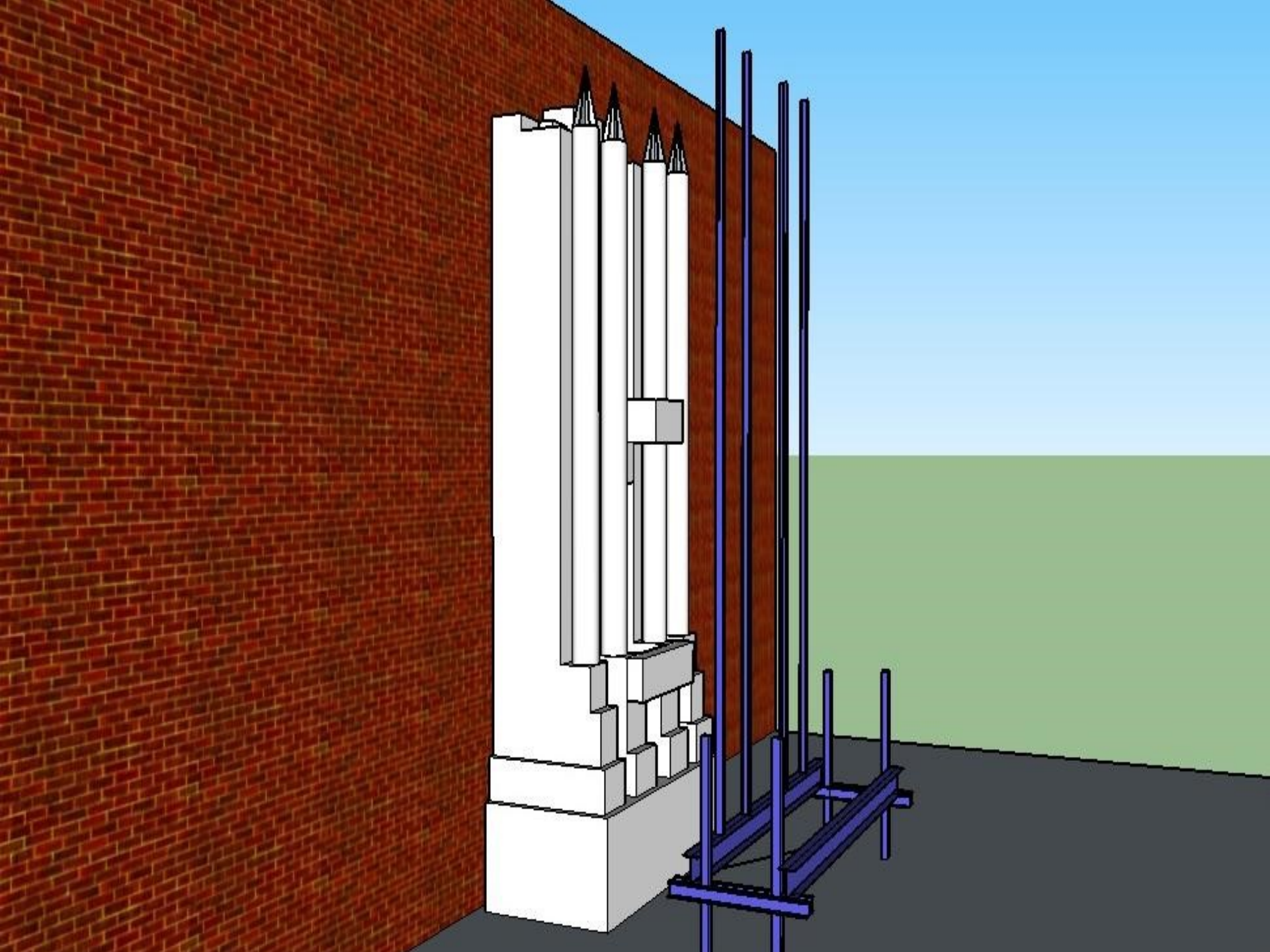
*Detached...
Raised 2m
then
re-attached
to new
concrete
wall*

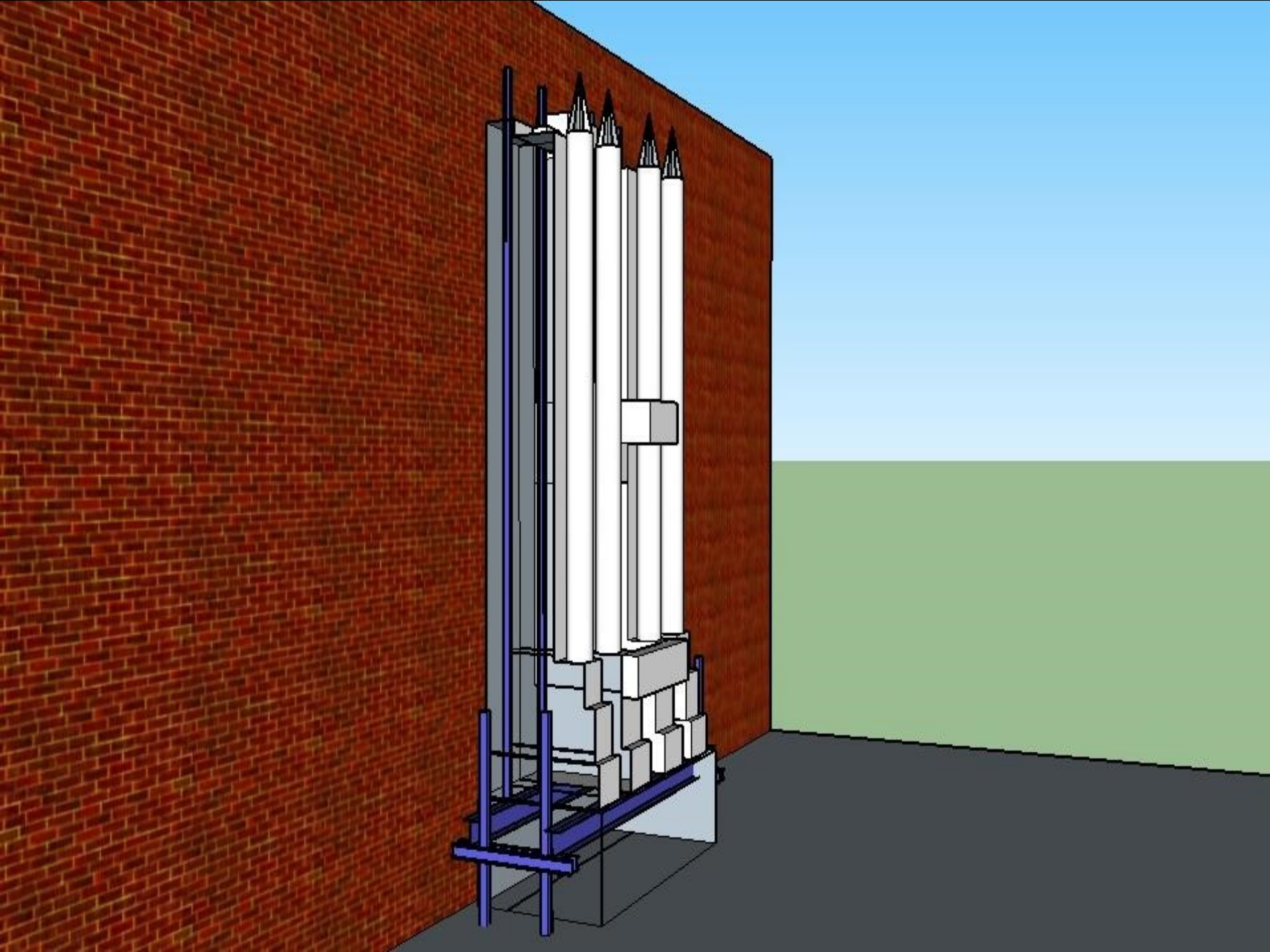
Civic Theatre Restoration & Strengthening

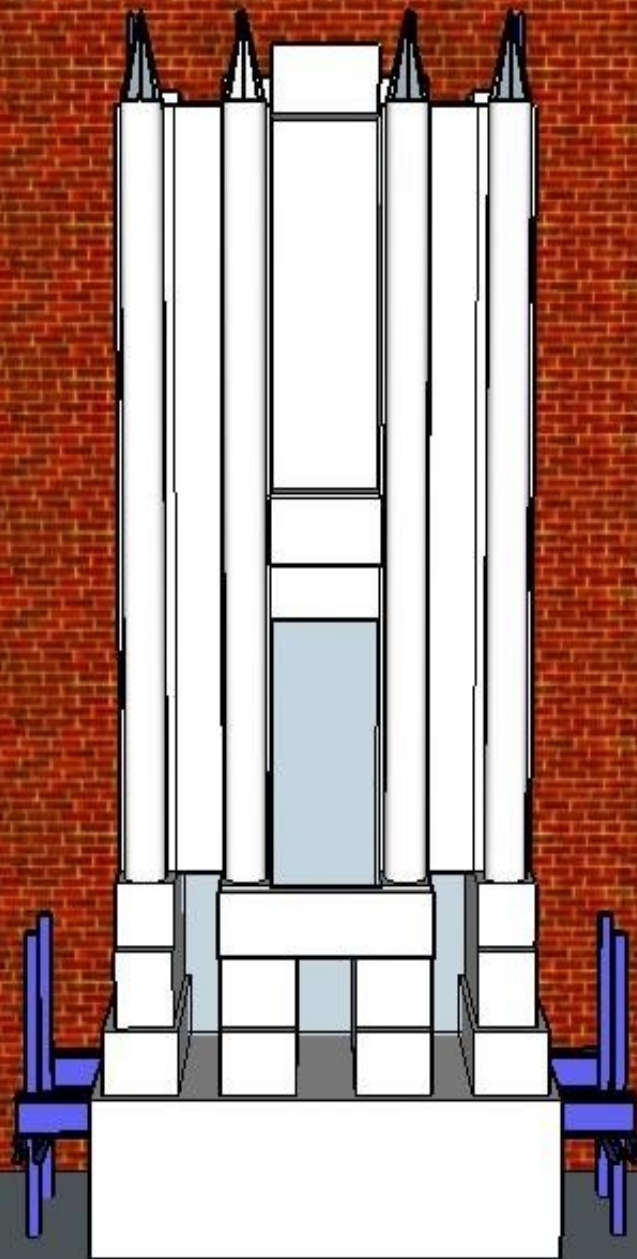
Opera Boxes

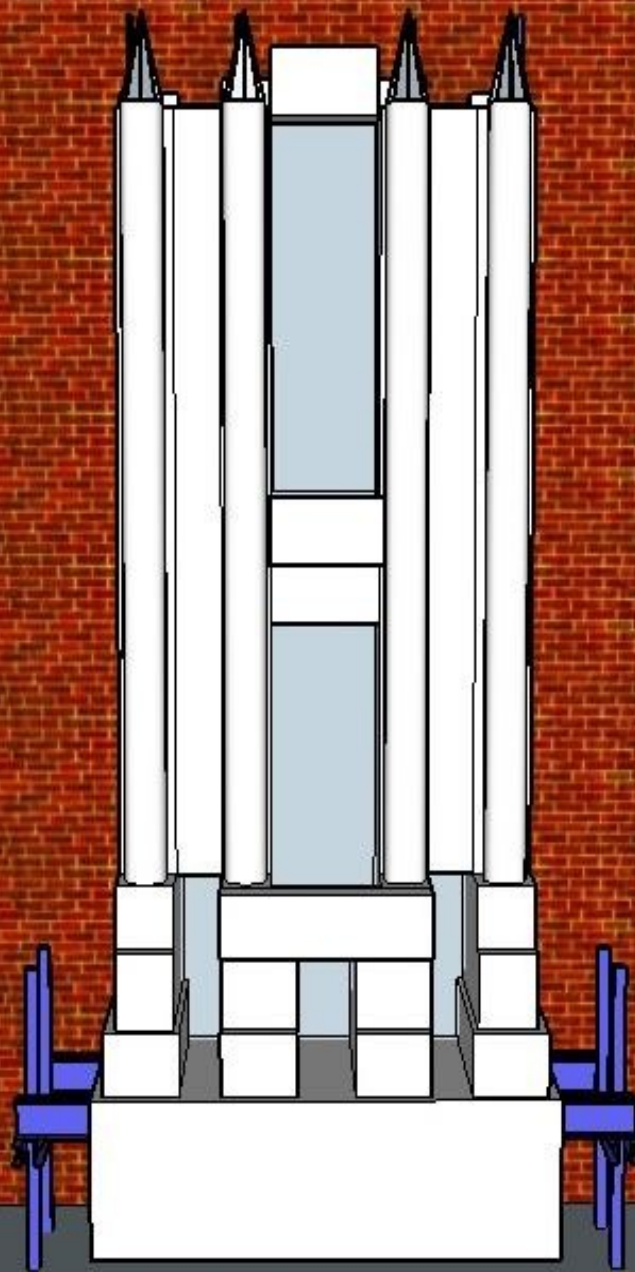
*To be raised
up 2 metres*

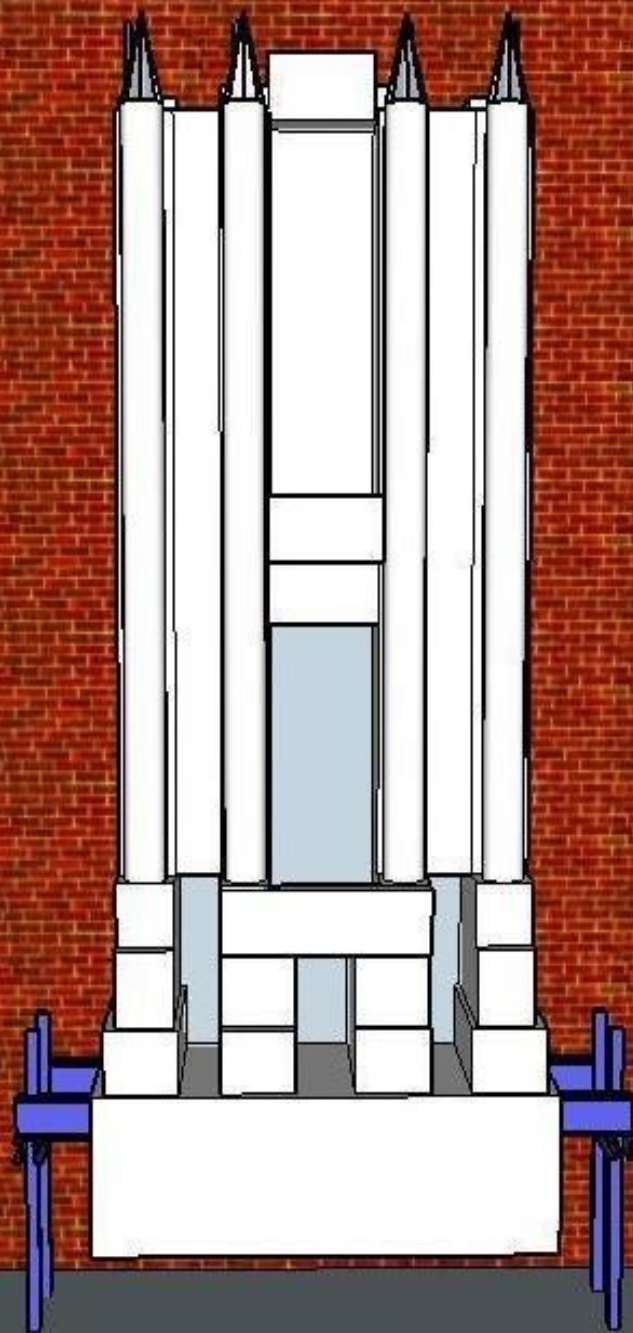


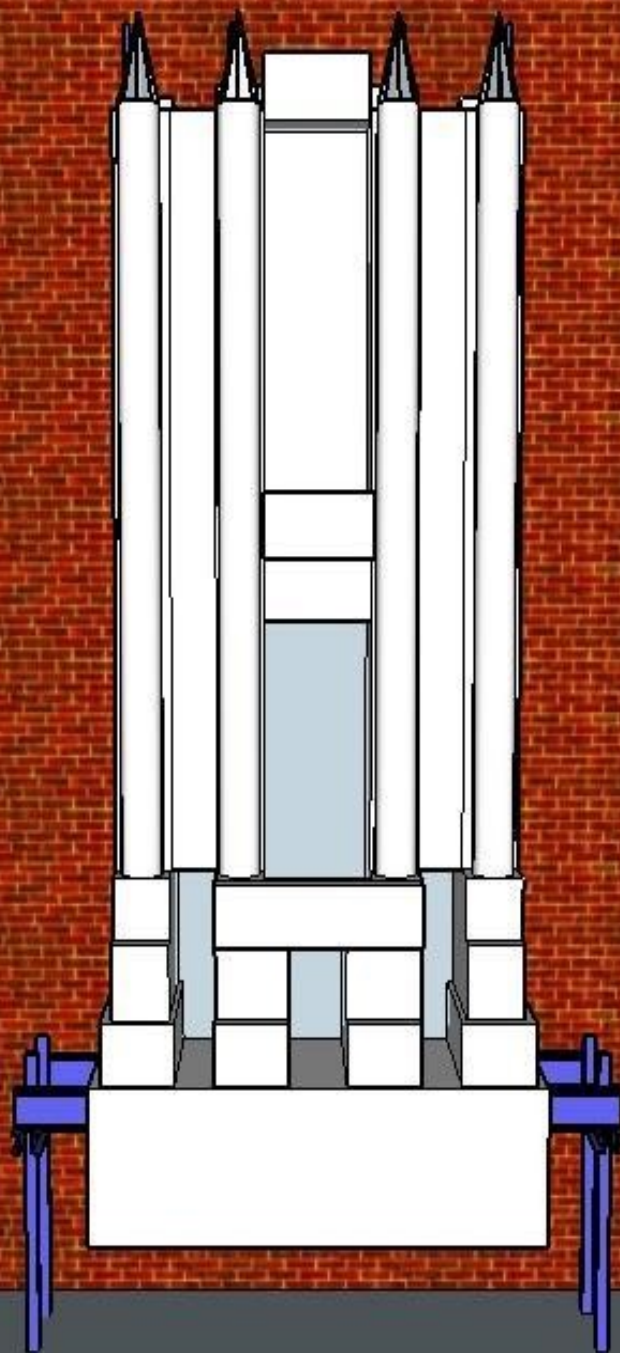












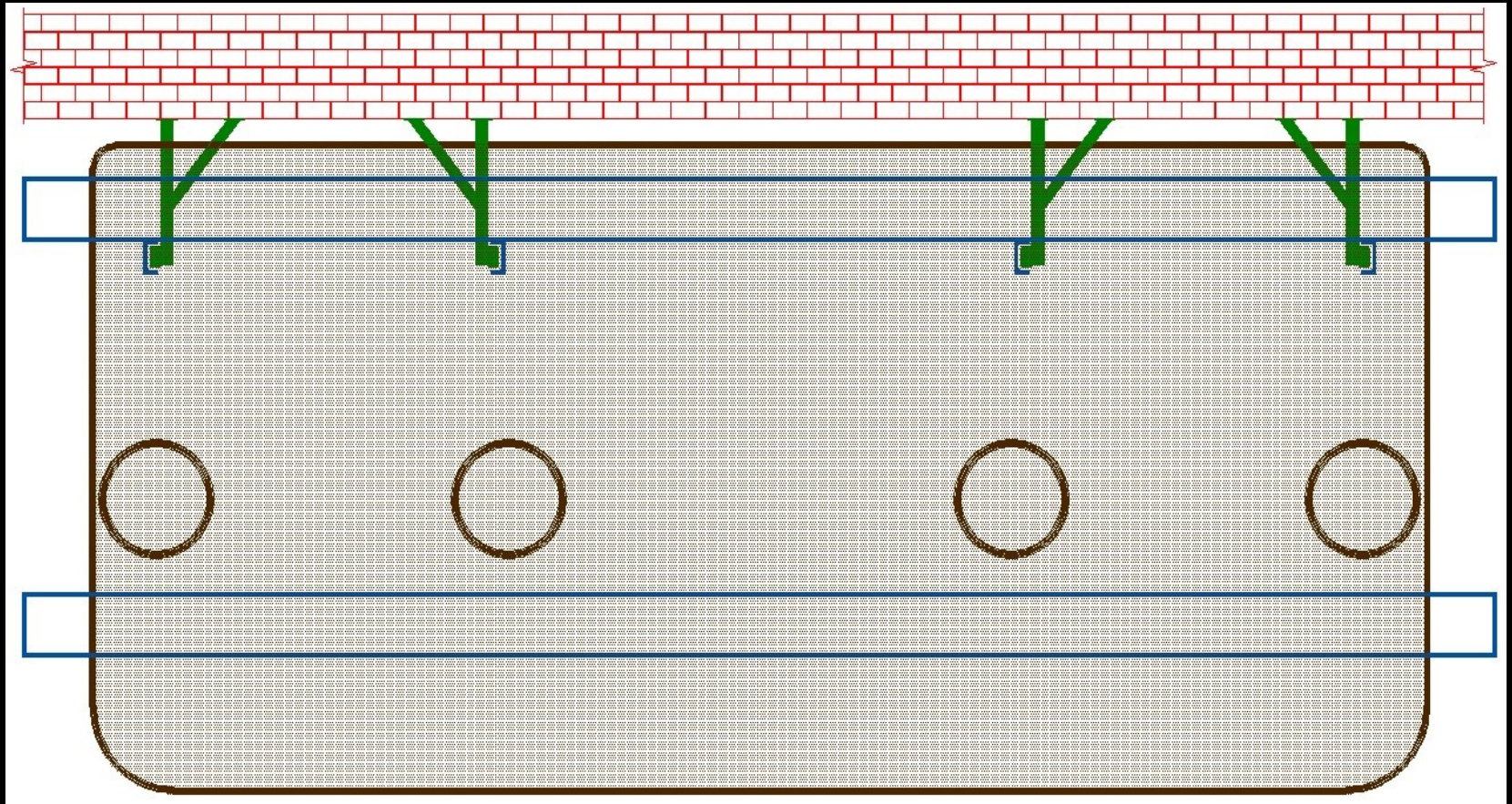
Civic Theatre Restoration & Strengthening

Opera Boxes

*To be raised
up 2 metres*

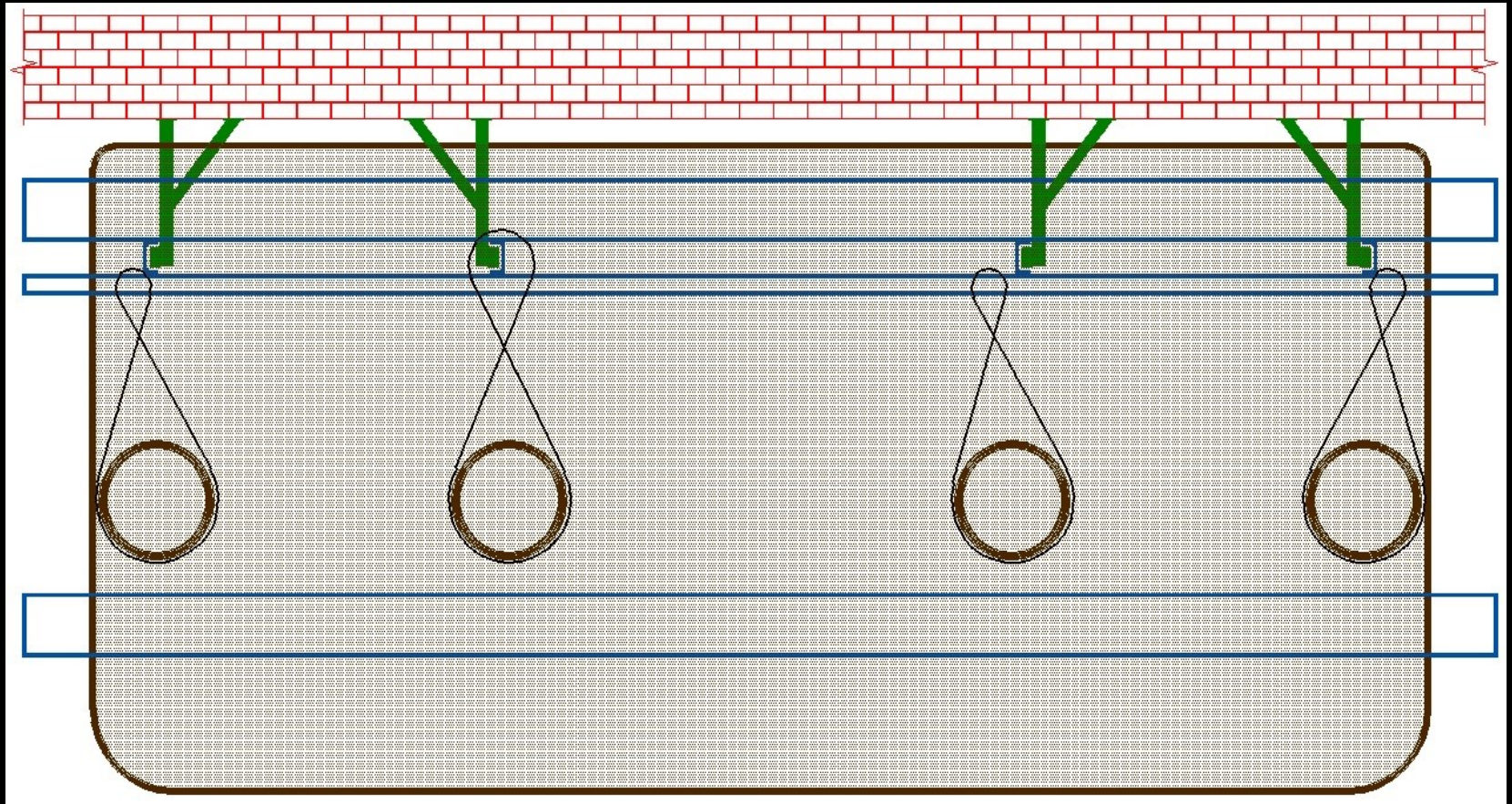


Civic Theatre Restoration & Strengthening



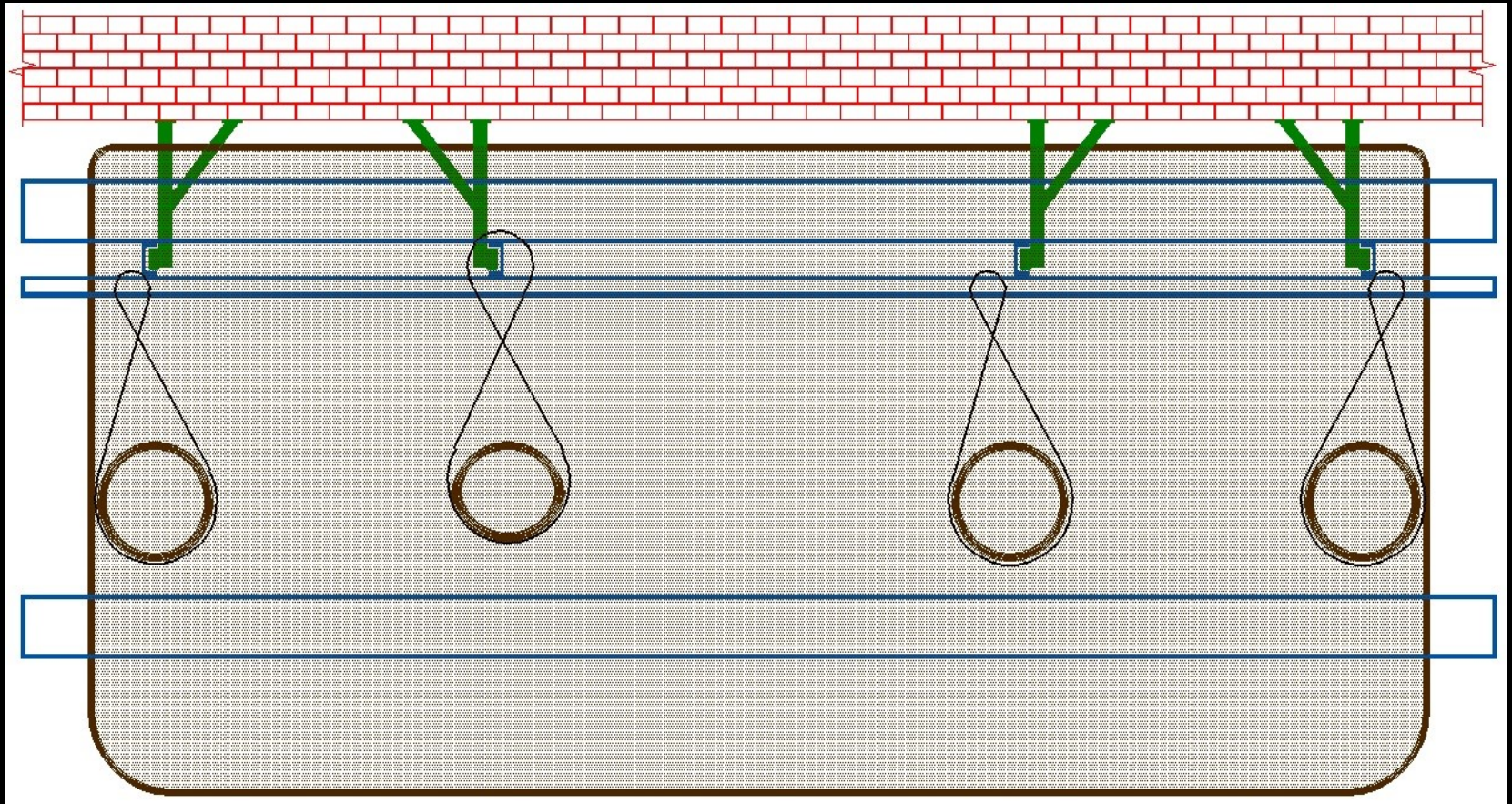
Plan View of Opera Box

Civic Theatre Restoration & Strengthening



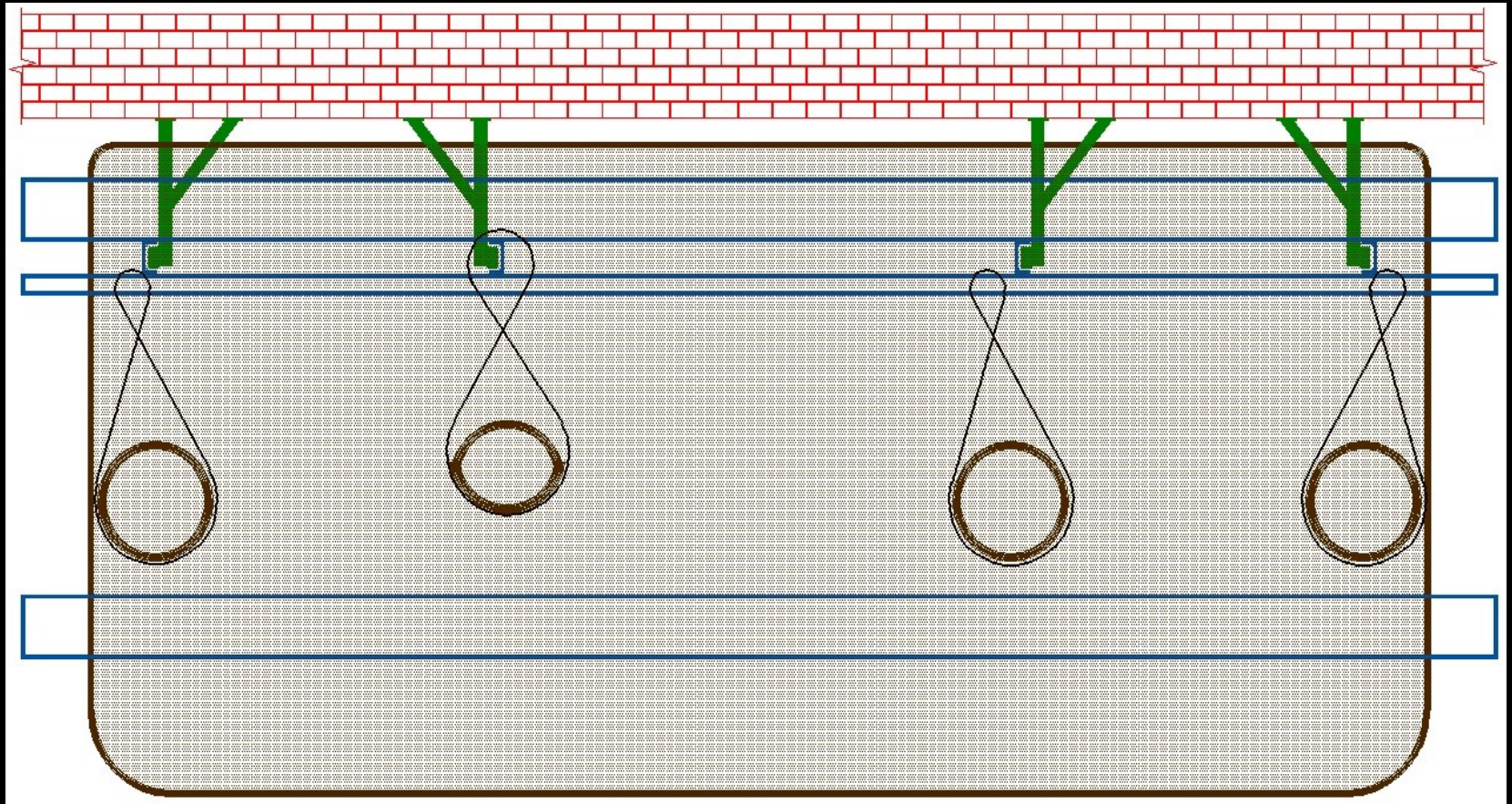
Plan View of Opera Box

Civic Theatre Restoration & Strengthening



Plan View of Opera Box

Civic Theatre Restoration & Strengthening



Plan View of Opera Box

Civic Theatre Restoration & Strengthening

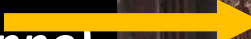


Civic Theatre Restoration & Strengthening

*Minaret
Tower*



*Opera
Box
(15 tonne)*



*Proscenium
Arch
(8.5 tonne)*



*All to be
raised two
metres to
suit new
Theatre
configuration*



*Plastering
& Painting*



